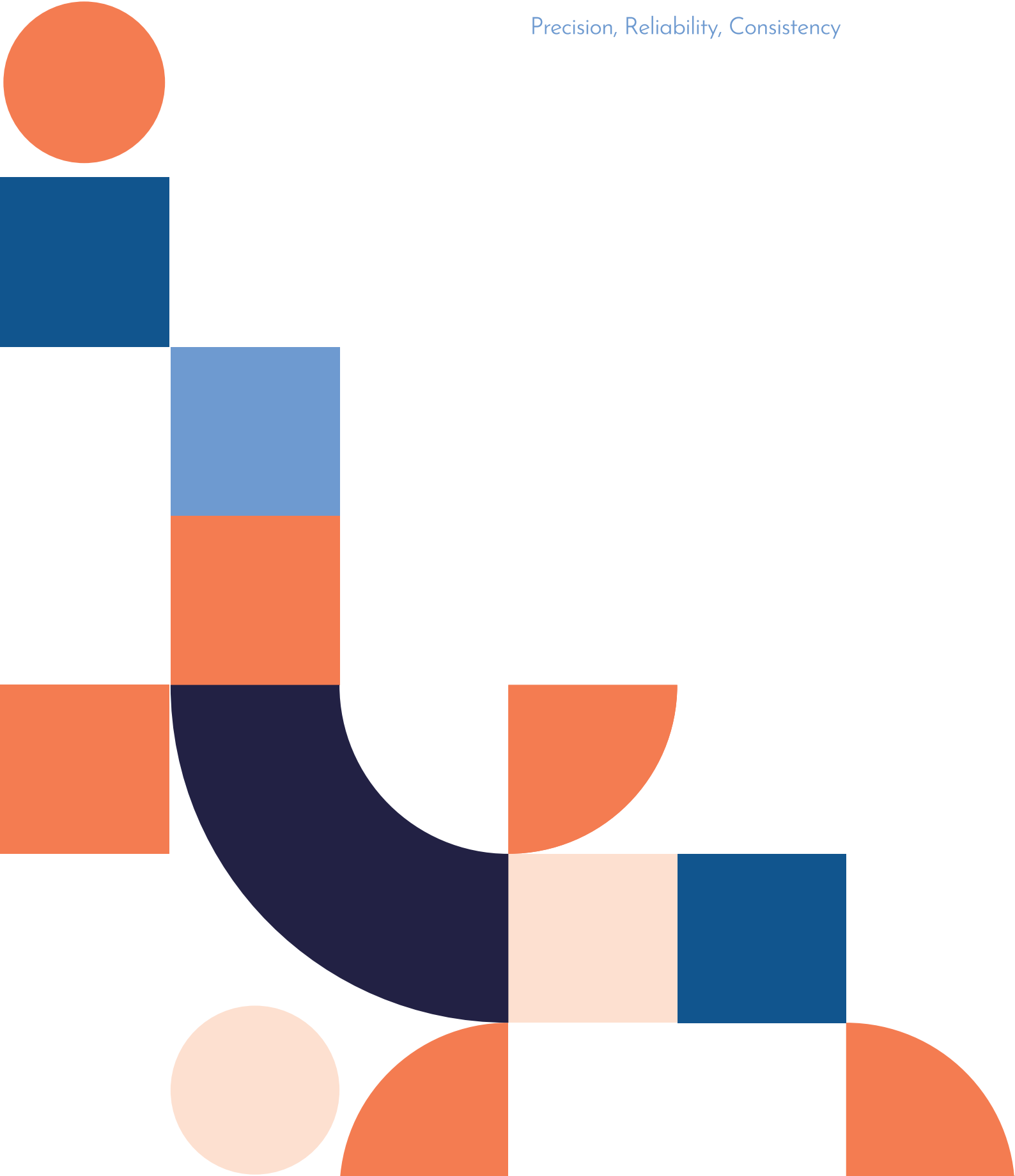


# andorate

Precision, Reliability, Consistency



# GA Health Story

In 1995 in the midst of the Variant Creutzfeldt-Jakob disease (vCJD) outbreak in the UK, Ken McCabe, the co-founder of GA Health, was invited by Manchester Royal Eye Hospital to develop a solution to prevent the potential transmission of this terrible disease during eye surgery. He took on the challenge and succeeded in being the pioneer in developing ophthalmic instruments for single-patient use in these critical procedures, forever changing infection prevention in ophthalmology.

Today, GA Health is a trusted name for infection prevention especially in endoscopy.

At GA Health, we don't just design products; we solve problems.

It's why medical professionals worldwide count on us, day in, day out.

We bring years of experience, innovative thinking, and a fresh approach to each infection prevention product we develop.

This is matched only by our passion for the best patient outcomes.

Each solution is thoughtfully designed using innovative technology, and we consistently strive to provide greener, more sustainable solutions.

With our global operation, strong supply chain, and international presence, we continue to be able to offer the reliability and efficiency that our customers need.

Wherever we are, we will never lose our core values that drive us towards innovation and better patient outcomes.

## Values



Passion



Quality



Integrity



Customer  
Focus



Simplicity



GA Health is a company with a mission: to develop effective solutions for infection prevention for patients through innovative design that prioritises our users' needs.

We are Global-Asia Health, spanning the globe and providing infection prevention solutions to hospitals and daycare centres in Australasia, Europe, United Kingdom and the United States.

We bring innovative design and a dedication to produce consistent and reliable products that benefit both patients and health professionals. Together, we can make GA Health the world's leading solution provider for infection prevention.



Early screening can significantly improve the gastrointestinal disease survival rate. To meet the increasing needs for infection prevention in gastroenterology in Australasia, Europe, United Kingdom and the United States, GA Health proudly presents Andorate, a portfolio of high performance and reliable devices for infection prevention from endoscopy preparation, procedure to endoscope cleaning, transport and storage.

Andorate's vision is to serve every step in the endoscopy cycle.



**Ken McCabe**  
Co-founder & President



**Cindy Ye**  
Co-founder & CEO

# Sustainability

In early 2020 GA Health began looking at ways to reduce the packaging we use. We have successfully completed the first phase of this project.

We have modified the layout of our Instructions For Use (IFU). IFUs contain essential information on directions for use of devices. The new layout is more compact reducing our paper usage by 67%.

The introduction of new packaging configurations has also reduced shipping volumes by up to 37%.

Plant-based ink will soon be applied in printing on the packaging.

In addition to these improvements, we use paper which is Forest Stewardship Council® (FSC®) certified. This gives us the reassurance that the paper we use is sustainably sourced.

These new measures are just the beginning. We continue to research and implement changes focusing on sustainability in our operations and products.

# Contents

- 05 Andorate on an Olympus® video scope system
- 06 Andorate on a Fujifilm® video scope system
- 07 Andorate on a Pentax® video scope system

## Endo Procedure

- 09 Champion Valve Set
- 20 Biopsy Valve
- 22 Vacutore Tubing
- 25 AquaPulse Irrigation Connector
- 27 AquaPulse Irrigation Tubing
- 28 Air Supply
- 30 Polyp Trap
- 32 Bite Block

## Endo Cleaning

- 35 Cleaning Adapter

## Endo Transport & Storage

- 38 Tip Guard

## Ordering Information

- 40 All products



# Andorate on an Olympus® video scope system



Gentle and effective suction performance

Suction Valve  
101004A



Sufficient insufflation; Effective lens cleaning

Champion Air-water Valve  
101004B



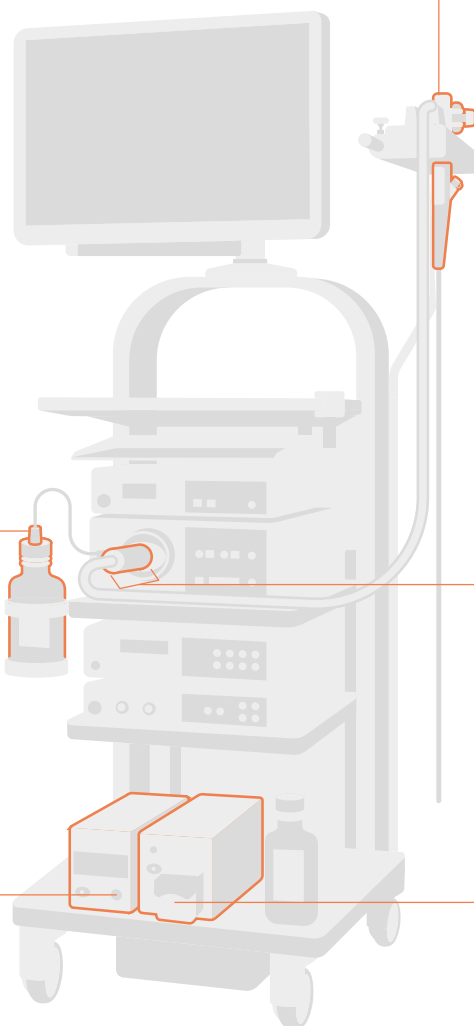
Soft seal for maintaining pressure and to provide for instrument passage

Biopsy Valve  
GAR028-S



Ideal for quick irrigation through the biopsy channel

AquaPulse Biopsy Irrigator  
GAR015



One set for 24-hour air-water delivery

Vacuore Air-Water Bottle Tubing with CO<sub>2</sub> Extend  
GAR025CO2EXT



Reusable stainless steel adapter

CO<sub>2</sub> Source Tubing Adapter  
GAR093



Easy lock and easy open chambers

ThomasTrap™ Polyp Trap with Two Removable Chambers  
GAR040



Prevents back-flow during irrigation

AquaPulse Irrigation Connector  
GAR027



AquaPulse Irrigation irrigation

Irrigation Tubing  
GAR083

# Andorate on a Fujifilm® video scope system



Gentle and effective suction performance

Suction Valve  
GAR087A



Sufficient insufflation;  
Effective lens cleaning

Champion Air-water Valve  
101087B



Soft seal for maintaining pressure and to provide for instrument passage

Biopsy Valve  
GAR028-S



Ideal for quick irrigation through the biopsy channel

AquaPulse Biopsy Irrigator  
GAR015



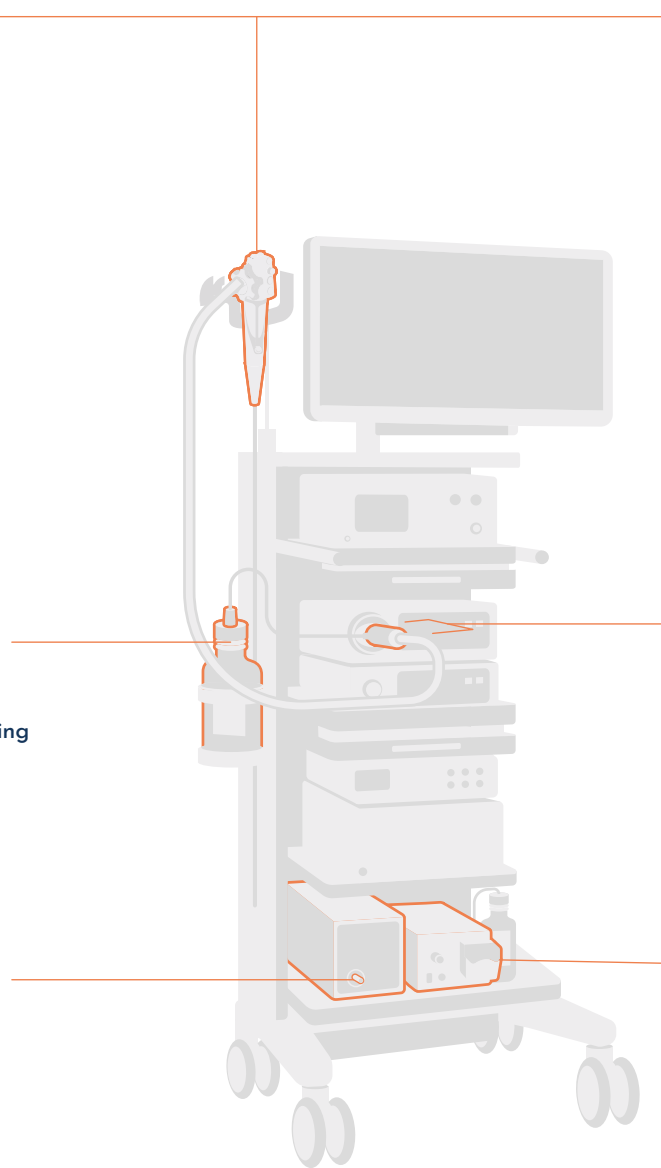
One set for 24-hour air-water delivery

Vacutore Air-water Bottle Tubing with CO2 Extend  
GAR090CO2EXT



Reusable stainless steel connector

CO2 Source Tubing Adapter  
GAR108



Click to open and close

PeralCatch™ Polyp Trap with one fixed chamber  
GAR014



Prevents back-flow during irrigation

AquaPulse Irrigation Connector  
GAR064



Stable and reliable irrigation

AquaPulse Irrigation  
GAR083

# Andorate on a Pentax® video scope system



Gentle and effective suction performance

Suction Valve  
GAR037A



Sufficient insufflation;  
Effective lens cleaning

Champion Air-water Valve  
101037B



Soft seal for maintaining pressure and to provide for instrument passage

Biopsy Valve  
GAR018-S



Prevents back-flow during irrigation

AquaPulse Irrigation Connector  
GAR048



Double filters,  
click to open and release

Click4Catch™ Polyp Trap  
with Four Removable Chambers  
GAR082



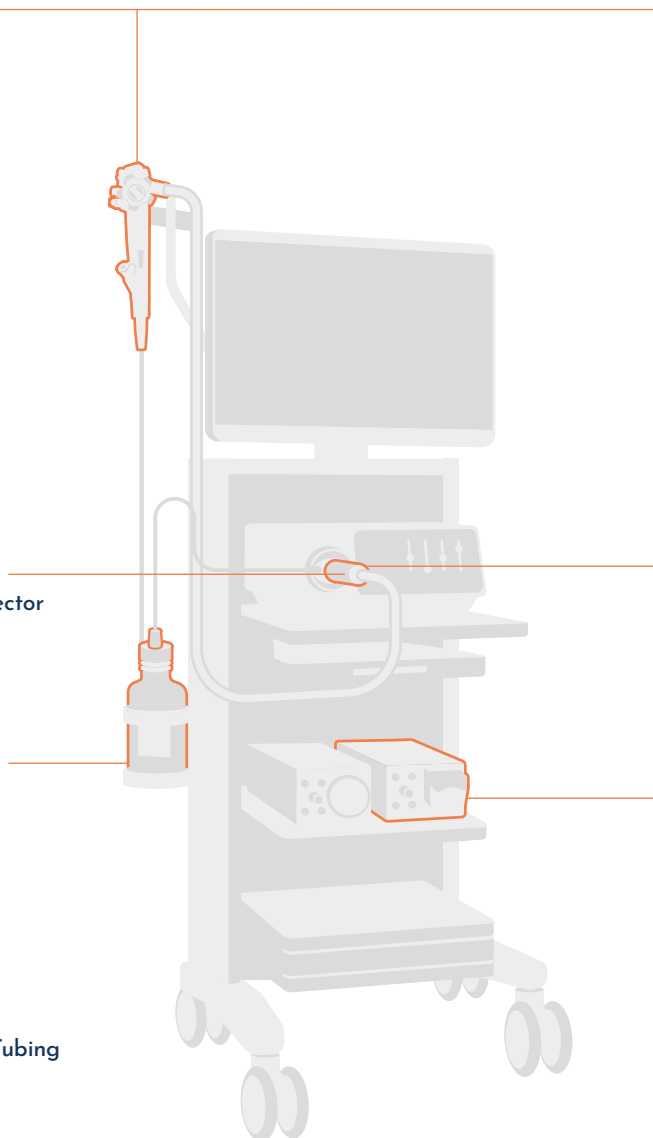
One set for 24-hour air-water delivery


Vacutore Air-water Bottle Tubing  
GAR076



Stable and reliable irrigation

AquaPulse Irrigation  
GAR083





# Endo Procedure

# Endo Procedure Champion Valve Set

## Why Andorate valves perform so well?

The products are precisely designed and made with as tight as **0.005mm** tolerance to match the endoscope channels. 0.005mm is only 10% of the average human hair. To achieve such high precision, the hard work is on manufacturability design, material selection, temperature and shrinkage control.

People are the most important reason why GA Health can make such high-quality products. We start from observing and getting to understand how the doctors and nurses complete an endoscopy from patient preparation, the procedure, patient discharge to scope reprocessing.

Our passion for designing solutions that can improve productivity and safety in the field drives all of us.

## Three basic notes to identify a good suction and airwater valve

### 1. Action

When the valves are in use, they should quickly and stably rebound upon finger release. Weak or uneven rebound can cause stickiness, clogging, and even jamming during the procedure.

### 2. Appearance

The edges should be smooth without any jaggedness. Rough edges and surfaces can cause stickiness, clogging and even jamming during the procedure.

### 3. Strength

The valves should be mounted on the port steadily. During the procedure, there is a lot of pressure inside the channels. Valves with a weak attachment can disrupt to the procedure in different forms.

**Coming in various configurations, Andorate valves are compatible with Olympus, Pentax, and Fujifilm GI endoscopes.**

# New Product

## CHAMPION VALVE SET

### For GI endoscopy

Enhanced performance for better procedural outcomes

Less Resistance • Tactile Feedback • Reduced Finger Fatigue



# Champion Valve Set provides enhanced performance with advanced Smoothing Technology

The single-patient use Champion Valves incorporate sealing rings meticulously designed using our advanced Smoothing Technology, aiming for better user experience and improved procedural outcomes.



## Less Resistance

This low resistance allows for an efficient rebound when used, reducing disruption caused by button issues during procedures.



## Tactile Feedback

The Champion Valves deliver precise and instant feedback with just gentle pressing. This allows for more effective and accurate control of air and water.



## Reduced Finger Fatigue

This low resistance allows for an efficient rebound when used, reducing disruption caused by button issues during procedures.



## Eco-friendly Packaging

This low resistance allows for an efficient rebound when used, reducing disruption caused by button issues during procedures.



# Valve Set

Compatible with  
Olympus® GI endoscope



## Champion Valve Set

Suction, air-water, biopsy valves  
3-piece set

101004

For Olympus®  
140/160/180/190/240/260/290  
Series GI Endoscopes

Qty. per box 50 units



## Champion Valve Set with Irrigation Connector

Suction, air-water, biopsy  
valves, irrigation connector  
4-piece set

101046

For Olympus®  
160/180/190/240/260/290  
Series GI Endoscopes

Qty. per box 50 units



## Champion Valve Set with Air-water Cleaning Adapter

Suction, air-water, biopsy valves,  
air-water cleaning adapter  
4-piece set

101047

For Olympus®  
140/160/180/190/240/260/290  
Series GI Endoscopes

Qty. per box 20 units



## Champion Valve Set with Irrigation Connector & Air-water Cleaning Adapter

Suction, air-water, biopsy valves, irrigation  
connector, air-water cleaning adapter  
5-piece set

101048

For Olympus®  
160/180/190/240/260/290  
Series GI Endoscopes

Qty. per box 20 units



## Champion Valve Set with Basic Cleaning Adapter Set

Suction, air-water, biopsy valves,  
air-water cleaning adapter,  
biopsy port cleaning adapter  
5-piece set

101049

For Olympus®  
140/160/180/190/240/260/290  
Series GI Endoscopes

Qty. per box 20 units



## Champion Combo Valve Set

Suction, air-water, biopsy valves, irrigation  
connector, air-water cleaning adapter,  
biopsy port cleaning adapter  
6-piece set

101050

For Olympus®  
160/180/190/240/260/290  
Series GI Endoscopes

Qty. per box 20 units



# Valve Set

Compatible with  
Fujifilm® GI endoscope



## Champion Valve Set

Suction, air-water, biopsy valves  
3-piece set

101087

For Fujifilm®  
700 Series GI Endoscopes

Qty. per box 50 units



## Champion Valve Set with Irrigation Connector

Suction, air-water, biopsy valves,  
irrigation connector  
4-piece set

101092

For Fujifilm®  
700 Series GI Endoscopes

Qty. per box 50 units



## Champion Valve Set with Air-water Cleaning Adapter

Suction, air-water, biopsy valves, air-water  
cleaning adapter  
4-piece set

101093

For Fujifilm®  
700 Series GI Endoscopes

Qty. per box 20 units



## Champion Valve Set with Irrigation Connector, Air-water Cleaning Adapter

Suction, air-water, biopsy valves, irrigation  
connector, air-water cleaning adapter  
5-piece set

101094

For Fujifilm®  
700 Series GI Endoscop

Qty. per box 20 units



## Champion Valve Set with Basic Cleaning Adapter Set

Suction, air-water, biopsy valves,  
air-water cleaning adapter,  
biopsy port cleaning adapter  
5-piece set

101095

For Fujifilm®  
700 Series GI Endoscopes

Qty. per box 20 units



## Champion Combo Valve Set

Suction, air-water, biopsy valves,  
irrigation connector, air-water cleaning  
adapter, biopsy port cleaning adapter  
6-piece set

101096

For Fujifilm®  
700 Series GI Endoscope, Sterile

Qty. per box 20 units

# Valve Set

Compatible with  
Pentax® GI endoscope



## Champion Valve Set

Suction, air-water, biopsy valves  
3-piece set

101037  
For Pentax®  
90/i10/i10c Series GI Endoscopes

Qty. per box 50 units



## Champion Valve Set with Irrigation Connector

Suction, air-water, biopsy valves,  
irrigation connector  
4-piece set

101081  
For Pentax®  
90/i10/i10c Series GI Endoscopes

Qty. per box 50 units

The background is a solid orange color. In the top-left corner, there is a large dark blue semi-circle and a white quarter-circle. In the bottom-left corner, there is a dark blue semi-circle, a white rectangle, a light blue semi-circle, and a dark blue semi-circle. In the bottom-center, there is a white semi-circle, a dark blue semi-circle, and a white semi-circle. In the bottom-right corner, there is a white circle and a dark blue semi-circle.

# Bronchoscope Valve Set

To Improve Accidental Breakage  
and Continuous Suction During Procedure

# Safer, Stronger and More Sustainable



Bronchoscope Valve Set

# The Top 3 Benefits to The Users



## **Safer** with Improved Toggling Mechanism

Working to achieve better patient outcomes by minimising continuous suction that could interrupt the procedure and cause discomfort.



## **Stronger** with Advanced Design

Ensuring the suction valve stays intact during installation, procedure and removal.



## **More Sustainable** with Recyclable and Vegetable Ink Printing-based Packaging

Reducing waste with the new bronchoscope valve set by using packaging printed with vegetable-based ink and made with up to 90% recyclable materials.



# Bronchoscope Valves



## Bronchoscope Valve Set

Suction, biopsy valves  
2-piece valve set  
GAR109

For Olympus®  
160/180/190/260/290  
Series GI Endoscopes  
**STERILE**

Qty. per box 50 units



## Bronchoscope Suction Valve

Suction valve  
GAR109A

For Olympus®  
160/180/190/260/290  
Series GI Endoscopes  
**STERILE**

Qty. per box 50 units



## Bronchoscope Biopsy Valve

Biopsy valve  
GAR021

For Olympus®  
160/180/190/260/290  
Series GI Endoscopes  
**STERILE**

Qty. per box 100 units

# Endo Procedure

## Biopsy Valve

The biopsy valve is the most underrated device used with the scope. FDA classifies biopsy valves as a Class 2 product which gives the biopsy valve the attention it deserves.

### Why the biopsy valve is so important?

- It maintains the air pressure during the procedure.
- It seals off the biohazards inside the endoscope, preventing them from leaking.
- It provides passage for biopsy instruments to get through the endoscope.

### Three basic notes to identify a workable biopsy valve

#### 1. Feel

The biopsy valve should not feel too soft or too hard. Both circumstances can lead to the loss of air inside the working channels. A hard biopsy valve poses a difficulty when inserting an instrument, which could cause damage to that instrument.

#### 2. Appearance

The edges should be smooth without any jaggedness. The biopsy valve has indirect contact with the patient by offering a passage for the instrument. Jaggedness or rough finishes may be introduced into the channel or even to the patient.

#### 3. Strength

The biopsy valve plays a critical role as a bio-bacterial seal. It is completely unacceptable if the biopsy valve is not mounted firmly enough on the port. When the biopsy valve pops off the port during a procedure, the contaminated materials from the working channels will immediately leak out of the scope. This can cause contamination to the patient, to the health professionals and to the procedure room.

The lid of the biopsy valve also presents another risk of cross contamination. If it isn't strong enough it can pop open or leak during the procedure.

**Using the right biopsy valve a basic step for an effective and safe endoscopy.**

# Biopsy Valve



## Biopsy Valve

GAR018

For Pentax® GI Endoscopes

**NON-STERILE**

Qty. per box 100 units

GAR018-S

For Pentax® GI Endoscopes

**STERILE**

Qty. per box 100 units



## Biopsy Valve

GAR028

For Fujifilm® & Olympus® GI Endoscopes

**NON-STERILE**

Qty. per box 100 units

GAR028-S

For Fujifilm® & Olympus® GI Endoscopes

**STERILE**

Qty. per box 100 units

# Endo Procedure

## Vacutore Tubing

The endoscope can't create the air and water system without the air-water bottle tubing. The Vacutore Tubing works with the air-water valve to insufflate the intestine and clean the lens for a better view.

### Three basic notes to identify a workable Vacutore Tubing

#### 1. Softness

The tubing should be soft enough to connect and disconnect to the scope multiple times during 24-hour use.

#### 2. Strength

For example, there is up to **80 psi** pressure during a colonoscopy. The connector must be able to sustain the pressure and stay on the scope all the time during the endoscopy. A weak connection point could cause disruption to the procedure.

#### 3. Compatibility

The water bottle thread may vary from market to market, brand to brand. Intelligent engineering is needed to make a cap that is compatible with different water bottles. If there is insufficient insufflation, the compatibility of the cap to the water bottle should be on the check-list.

# Vacutore Tubing

For Olympus® GI endoscope



Vacutore Tubing

GAR025

Air-water Bottle Tubing  
For Olympus®  
140/160/180/190/240/260/290 Series  
GI Endoscopes

Qty. per box 20 units



Vacutore Tubing  
with CO<sub>2</sub> Extend

GAR025CO2EXT

Air-water Bottle Tubing  
For Olympus®  
140/160/180/190/240/260/290 Series  
GI Endoscopes

Qty. per box 10 units

For Pentax® GI endoscope



Vacutore Tubing

GAR072

Air-water Bottle Tubing  
For Pentax® 90 Series  
GI Endoscopes

Qty. per box 20 units



Vacutore Tubing  
with CO<sub>2</sub> Extend

GAR072CO2EXT

Air-water Bottle Tubing  
For Pentax® 90 Series  
GI Endoscopes

Qty. per box 10 units

# Vacutore Tubing

For Fujifilm® GI endoscope



Vacutore Tubing

GAR088

Air-water Bottle Tubing  
For Fujifilm® 500/600 Series  
GI Endoscopes

Qty. per box 20 units



Vacutore Tubing  
with CO<sub>2</sub> Extend

GAR088CO2EXT

Air-water Bottle Tubing  
For Fujifilm® 500/600 Series  
GI Endoscopes

Qty. per box 10 units



vacutore tubing

GAR090

Air-water Bottle Tubing  
For Fujifilm® 700 Series  
GI Endoscopes

Qty. per box 20 units



Vacutore Tubing  
with CO<sub>2</sub> Extend

GAR090CO2EXT

Air-water Bottle Tubing  
For Fujifilm® 700 Series  
GI Endoscopes

Qty. per box 10 units

## Endo Procedure

# AquaPulse Irrigation Connector

**What is the most important job of an Irrigation Connector besides connecting the irrigation tubing to the scope?**

That is to prevent contaminated water in the endoscope channel from backflowing to the 24-hour multi-patient use water bottle.

Too much resistance will reduce the irrigation water flow. Too little resistance will fail to prevent the back flow. Andorate knows the key to this balance.

## AquaPulse Irrigation Tubing

**What can possibly go wrong with the irrigation during the GI procedure?**

Dripping, blowing up, breaking-up, back-flow, no priming could appear.

Andorate irrigation tubing gives a 24-hour stable and reliable flow. With the anti back-flow valve, the 24-hour use irrigation tubing with the single-patient use connector provides safe GI irrigation.

**Use Andorate single-patient use connector with the 24-hour use irrigation tubing to provide safe GI irrigation.**

# AquaPulse Irrigation Connector



AquaPulse Irrigation Connector  
GAR027

For Olympus® 160/180/190/240/260/290  
Series GI Endoscopes

Qty. per box 100 units



AquaPulse Irrigation Connector  
GAR048

For Pentax® 90/i10/i10c Series  
GI Endoscopes

Qty. per box 100 units



AquaPulse Irrigation Connector  
GAR064

For Fujifilm® 500/600/700 Series  
GI Endoscopes

Qty. per box 100 units



AquaPulse Biopsy Irrigator  
GAR015

For Fujifilm® & Olympus®  
GI Endoscopes

Qty. per box 100 units

# AquaPulse Irrigation Tubing

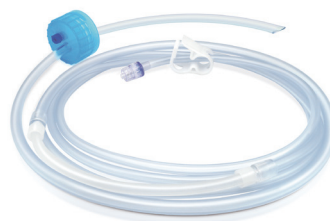


## AquaPulse Irrigation Tubing

GAR073

For Olympus® OFP and  
Endo Stratus™ EGA-500 Irrigation Pump

Qty. per box 10 units



## AquaPulse Irrigation Tubing

GAR083

For Olympus® OFP, Endo Stratus™ EGA-500  
and EGP-100 Irrigation Pump

Qty. per box 10 units



# Endo Procedure

## Air Supply

Carbon dioxide (CO<sub>2</sub>) is widely used for insufflation in endoscopy.

CO<sub>2</sub> insufflation is demonstrated in the literature to cause less abdominal discomfort as it is quickly reabsorbed by the body. Andorate presents a very high quality of CO<sub>2</sub> source tubing with a very fine micro filter, which particularly works for the insufflator with a pressure sensing mode.

# Air Supply



CO<sub>2</sub> Source  
Tubing Adapter

GAR093

For Olympus®  
UCR CO<sub>2</sub> Insufflator

Qty. per box 100 units



CO<sub>2</sub> Source  
Tubing Adapter

GAR108

For Fujifilm®  
GW-100 Insufflator

Qty. per box 100 units



CO<sub>2</sub> Source Tubing with  
Luer Connector

GAR047

Qty. per box 10 units

# Endo Procedure Polyp Trap

## How to make better use of the traditional polyp trap in the GI procedure?

What if the nurse could see inside the trap at every angle? What if the trap could give a clear indication to the nurse in opening, twisting, closing or separating the samples? What if there is an extra filter to ensure the sample has no way to escape?

The Andorate polyp trap range is designed with all these benefits in mind. From single chamber to four chambers, there must be one for your needs. If not, contact us any time. We would love to hear your feedback.

# Polyp Trap



PearlCatch™ Polyp Trap  
with one fixed chamber  
GAR014

Qty. per box 50 units



ThomasTrap™ Polyp Trap  
with two removable chambers  
GAR040

Qty. per box 20 units



Click4Catch™ Polyp Trap  
with four removable chambers  
GAR082

Qty. per box 12 units



Basic Polyp Trap  
with four fixed chambers  
GAR023

Qty. per box 12 units

# Endo Procedure Bite Block

## What can possibly go wrong with a bite block?

On FDA's Maude Adverse Event Report, there are dozens of reports related to bite blocks such as laceration of the patient's tongue, lip and face, or a crack occurs when it is bitten too hard.

To ensure structure integrity and to achieve smooth edges, we put extra effort into developing its manufacturability. Our bite blocks are ergonomically designed and provide extra comfort to patients with soft comfortable silicone rubber.

# Bite Block



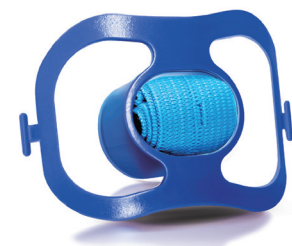
Bite Block  
66Fr with strap, extra space for finger  
SDPC0210

Qty. per box 100 units



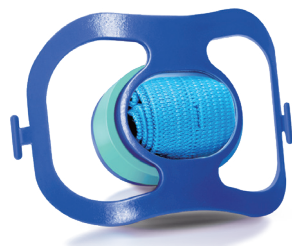
Bite Block  
66Fr with strap and tooth protector,  
extra space for finger  
SDPC0210F

Qty. per box 100 units



Bite Block  
55.5Fr with strap  
SDPC0209A

Qty. per box 100 units



Bite Block  
55.5Fr with strap and tooth protector  
SDPC0209

Qty. per box 100 units



Bite Block  
66Fr with oxygen connection  
GAR044

Qty. per box 100 units



Bite Block  
66Fr with oxygen connection  
and tooth protector  
GAR044F

Qty. per box 100 units



# Endo Cleaning

# Endo Cleaning Cleaning Adapter

To improve the productivity in endoscopy is the core objective of Andorate.

The cleaning adapters, designed and manufactured at a high engineering level, are our best sellers.

They come in different configurations to offer convenience at the point-of-use cleaning.

# Cleaning Adapter

## Optimising Endoscope Bedside Cleaning



For Olympus® GI Endoscope  
Air-water Cleaning Adapter  
GAR038

For Olympus® GI Endoscopes

Qty. per box 100 units



For Fujifilm® GI Endoscope  
Air-water Cleaning Adapter  
GAR105

For Fujifilm® 700 Series GI Endoscopes

Qty. per box 100 units



Biopsy Port Cleaning Adapter  
GAR075

For Olympus® & Fujifilm® Series GI Endoscopes

Qty. per box 50 units



Basic Cleaning Adapter Set  
Air-water & Biopsy Port Cleaning Adapter  
GAR3875-NS

For Olympus® GI Endoscopes

Qty. per box 50 units



Basic Cleaning Adapter Set  
Air-water & Biopsy Port Cleaning Adapter  
GAR10575-NS

For Fujifilm® 700 Series GI Endoscopes

Qty. per box 50 units

\* The Air-water Cleaning Adapter is provided with a warning tag to differentiate it from the procedure Air-water Valve.

# Endo Transport & Storage



# Endo Transport & Storage Tip Guard

## How to reduce wear-and-tear during endoscope transport and storage?

Ordinary products like the sponge do not allow the scope to dry completely, and the mesh tube does not provide strong protection. When we were putting ideas together, we set a clear objective of this product to protect the scope during transport and storage with zero moisture.

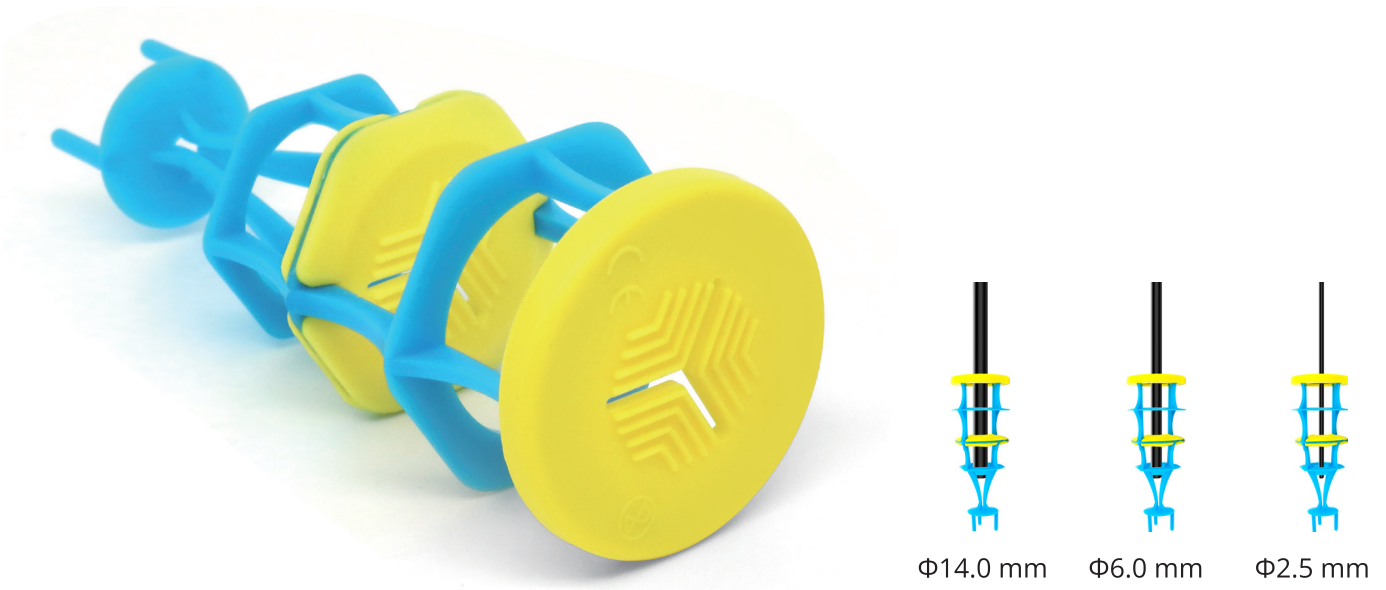
Zero moisture requires great ventilation structure.

The greater ventilation, the less contact with the scope.

Andorate tip guard is designed to softly attach to the scope at all time during transport and storage, with as little as possible contact with the scope.

We even gave ourselves a further push to develop the tip guard to fit most scopes.

# Tip Guard



## Secure Attachment without Moisture

Protecting endoscope from storage to transportation

### Effective Moisture Ventilation

Minimum contact with maximised ventilation to prevent bioburden growing.

### Secure Attachment

Silicon discs allow secure attachment to the scope avoiding possible breakage during transport and storage

### One Size Solution

One size fits most scopes to provide easy supply management for the users.

### Robust Shock Absorption

Designed to absorb shock and vibration effectively with the rib structure.

## Endoscope Tip Guard

GAR107  
NON-STERILE

Qty. per box 50 units

GAR107-S  
STERILE

Qty. per box 50 units

# Ordering Information



# Endo Procedure

## Valve Set

Product Code	Description	Qty Per Box
101004	<b>Champion 3-piece Valve Kit (Suction, Air/Water and Biopsy Valve)</b> For Olympus® 140/160/180/190/240/260/290 Series GI Endoscopes, Sterile	50 units
101046	<b>Champion 4-piece Valve Kit (Suction, Air/Water, Biopsy Valve and Auxiliary Water Connector)</b> For Olympus® 160/180/190/240/260/290 Series GI Endoscopes, Sterile	50 units
101047	<b>Air Water Channel Cleaning Adapter + Champion 3-piece Valve Kit (Suction, Air/Water and Biopsy Valves)</b> For Olympus® 140/160/180/190/240/260/290 Series GI Endoscopes, Sterile	20 units
101048	<b>Air Water Channel Cleaning Adapter + Champion 4-piece Valve Kit (Suction, Air/Water Biopsy Valves and Auxiliary Water Connector)</b> For Olympus® 160/180/190/240/260/290 Series GI Endoscopes, Sterile	20 units
101049	<b>2-piece Cleaning Adapter + Champion 3-piece Valve Kit (Biopsy Port and Air Water Channel Cleaning Adapter) + (Suction, Air/Water and Biopsy Valves )</b> For Olympus® 140/160/180/190/240/260/290 Series GI Endoscopes, Sterile	20 units
101050	<b>2-piece Cleaning Adapter + Champion 4-piece Valve Kit (Biopsy Port and Air Water Channel Cleaning Adapter) + (Suction, Air/Water, Biopsy Valves and Auxiliary Water Connector )</b> For Olympus® 160/180/190/240/260/290 Series GI Endoscopes, Sterile	20 units
GAR109	<b>2-piece Valve Kit (Suction &amp; Biopsy Valves)</b> For Olympus® 160/180/190/260/290 Series Bronchoscopes, Sterile	50 units
GAR109A	<b>Suction Valve</b> For Olympus®160/180/190/260/290 Series Bronchoscopes, Sterile	50 units

# Endo Procedure

## Valve Set

Product Code	Description	Qty Per Box
101087	<b>Champion 3-piece Valve Kit (Suction, Air/Water and Biopsy Valve)</b> For Fujifilm® 700 series GI Endoscopes, Sterile	50 units
101092	<b>Champion 4-piece Valve Kit (Suction, Air/Water, Biopsy Valve and Auxiliary Water Connector)</b> For Fujifilm® 700 series GI Endoscopes, Sterile	50 units
101093	<b>Air Water Channel Cleaning Adapter + Champion 3-piece Valve Kit (Suction, Air/Water and Biopsy Valves)</b> For Fujifilm® 700 series GI Endoscopes, Sterile	20 units
101094	<b>Air Water Channel Cleaning Adapter + Champion 4-piece Valve Kit (Suction, Air/Water, Biopsy Valves and Auxiliary Water Connector)</b> For Fujifilm® 700 series GI Endoscopes, Sterile	20 units
101095	<b>2-piece Cleaning Adapter + Champion 3-piece Valve Kit (Biopsy Port and Air Water Channel Cleaning Adapter) + (Suction, Air/Water and Biopsy Valves )</b> For Fujifilm® 700 series GI Endoscopes, Sterile	20 units
101096	<b>2-piece Cleaning Adapter + Champion 4-piece Valve Kit (Biopsy Port and Air Water Channel Cleaning Adapter) + (Suction, Air/Water, Biopsy Valves and Auxiliary Water Connector )</b> For Fujifilm® 700 series GI Endoscopes, Sterile	20 units
101037	<b>Champion 3-piece Valve Kit (Suction, Air/Water and Biopsy Valve)</b> For Pentax® 90/i10/i10c Series GI Endoscopes, Sterile	50 units
101081	<b>Champion 4-piece Valve Kit (Suction, Air/Water, Biopsy Valve and Auxiliary Water Connector)</b> For Pentax® 90/i10/i10c Series GI Endoscopes, Sterile	50 units

# Endo Procedure

## Biopsy Valve

Product Code	Description	Qty Per Box
GAR021	<b>Biopsy Valve</b> For Olympus®160/180/190/260/290 Series GI Endoscopes, Sterile	100 units
GAR028	<b>Biopsy Valve</b> For Olympus® and Fujifilm® GI Endoscopes, Non-Sterile	100 units
GAR028-S	<b>Biopsy Valve</b> For Olympus® and Fujifilm® GI Endoscopes, Sterile	100 units
GAR018	<b>Biopsy Valve</b> For Pentax® GI Endoscopes, Non-Sterile	100 units
GAR018-S	<b>Biopsy Valve</b> For Pentax® GI Endoscopes, Sterile	100 units

## Air-water Bottle Tubing

Product Code	Description	Qty Per Box
GAR025	<b>Vacutore® Air/Water Bottle Tubing</b> For Olympus® 140/160/180/190/240/260/290 Series GI Endoscopes, Sterile	20 units
GAR025CO2EXT	<b>Vacutore® Air/Water Bottle Tubing with CO<sub>2</sub> Extend</b> For Olympus® 140/160/180/190/240/260/290 Series GI Endoscopes, Sterile	10 units
GAR088	<b>Vacutore® Air/Water Bottle Tubing</b> For Fujifilm® 500/600 Series GI Endoscopes, Sterile	20 units
GAR088CO2EXT	<b>Vacutore® Air/Water Bottle Tubing with CO<sub>2</sub> Extend</b> For Fujifilm® 500/600 Series GI Endoscopes, Sterile	10 units
GAR090	<b>Vacutore® Air/Water Bottle Tubing</b> For Fujifilm® 700 Series GI Endoscopes, Sterile	20 units
GAR090CO2EXT	<b>Vacutore® Air/Water Bottle Tubing with CO<sub>2</sub> Extend</b> For Fujifilm® 700 Series GI Endoscopes, Sterile	10 units
GAR072	<b>Vacutore® Air/Water Bottle Tubing</b> For Pentax® 90 Series GI Endoscopes, Sterile	20 units
GAR072CO2EXT	<b>Vacutore® Air/Water Bottle Tubing with CO<sub>2</sub> Extend</b> For Pentax® 90 Series GI Endoscopes, Sterile	10 units
GAR076	<b>Vacutore® Air/Water Bottle Tubing with Side Port</b> For Pentax® 90 Series GI Endoscopes, Sterile	20 units

## Air Supply

Product Code	Description	Qty Per Box
GAR047	Vacutore® CO <sub>2</sub> Source Tubing with Luer Connector Non-Sterile	10 units
GAR091	Vacutore® CO <sub>2</sub> Extend Tubing with Luer Connector Non-Sterile	20 units

## Reusable Connector

Product Code	Description	Qty Per Box
GAR093	Vacutore® CO <sub>2</sub> Source Tubing Adapter For Olympus® UCR CO <sub>2</sub> Insufflator, Non-Sterile	100 units
GAR108	Vacutore® CO <sub>2</sub> Source Tubing Adapter For Fujifilm® GW-100 Insufflator, Non-Sterile	100 units

## Irrigation Connector

Product Code	Description	Qty Per Box
GAR015	Biopsy Irrigator For Olympus® and Fujifilm® GI Endoscopes, Sterile	100 units
GAR027	Aquapulse® Auxiliary Water Connector For Olympus® 160/180/190/240/260/290 Series GI Endoscopes, Sterile	100 units
GAR064	Aquapulse® Auxiliary Water Connector For Fujifilm® 500/600/700 Series GI Endoscopes, Sterile	100 units
GAR048	Aquapulse® Auxiliary Water Connector For Pentax® 90/i10/i10c Series GI Endoscopes, Sterile	100 units

## Irrigation Tubing

Product Code	Description	Qty Per Box
GAR073	<b>Aquapulse® Irrigation Tubing</b> For Olympus® OFP and Endo Stratus™ EGA-500 Irrigation Pump, Sterile	10 units
GAR083	<b>Aquapulse® Irrigation Tubing</b> For Olympus® OFP and Endo Stratus™ EGA-500 and Endogator™ EGP-100 Irrigation Pump, Sterile	10 units

## Polyp Trap

Product Code	Description	Qty Per Box
GAR014	<b>PearlCatch™ Single Chamber Polyp Trap</b> Non-Sterile	50 units
GAR023	<b>Four Chamber Polyp Trap</b> Non-Sterile	12 units
GAR040	<b>ThomasTrap™ Polyp Trap with two removable Chambers</b> Non-Sterile	20 units
GAR082	<b>Click4Catch™ Click into Place Polyp Trap with four removable Capture Chambers</b> Non-Sterile	12 units

## Bite Block

Product Code	Description	Qty Per Box
GAR044	<b>Bite Block 66Fr with Oxygen Connection</b> Non-Sterile	100 units
GAR044F	<b>Bite Block 66Fr with Oxygen Connection and Tooth Protector</b> Non-Sterile	100 units
SDPC0209	<b>Bite Block 55.5Fr with Strap and Tooth Protector</b> Non-Sterile	100 units
SDPC0209A	<b>Bite Block 55.5Fr with Strap</b> Non-Sterile	100 units
SDPC0210	<b>Bite Block 66Fr with Strap</b> Non-Sterile	100 units
SDPC0210F	<b>Bite Block 66Fr with Strap and Tooth Protector</b> Non-Sterile	100 units

# Endo Cleaning

## Cleaning Adapter

Product Code	Description	Qty Per Box
GAR038	<b>Air Water Channel Cleaning Adapter</b> For Olympus® GI Endoscopes, Non-Sterile	100 units
GAR3875-NS	<b>2-piece Cleaning Adapter Kit (Biopsy Port &amp; Air Water Channel Cleaning Adapter)</b> For Olympus® GI Endoscopes, Non-Sterile	50 units
GAR075	<b>Biopsy Port Cleaning Adapter</b> For Olympus® & Fujifilm® GI Endoscopes, Non-Sterile	50 units
GAR105	<b>Air Water Channel Cleaning Adapter</b> For Fujifilm® 700 Series GI Endoscopes, Non-Sterile	100 units
GAR10575-NS	<b>2-piece Cleaning Adapter Kit (Biopsy Port &amp; Air Water Channel Cleaning Adapter)</b> For Fujifilm® 700 Series GI Endoscopes, Non-Sterile	50 units

● Olympus® ● Fujifilm®



# Endo Transport & Storage

## Tip Guard

Product Code	Description	Qty Per Box
GAR107	Endoscope Tip Guard Non-Sterile	50 units
GAR107-S	Endoscope Tip Guard Sterile	50 units





# andorate

Precision, Reliability, Consistency



**Headquarters:**

**GA Health Company Limited**  
Unit 1511-13 & 15, 15/F,  
Tower 2, Grand Central Plaza,  
138 Shatin Rural Committee Road,  
Shatin, N.T., Hong Kong  
☎ +852 2833 9010  
✉ [info@gahealth.com](mailto:info@gahealth.com)  
🌐 [GAhealth.com](http://GAhealth.com)

**Europe:**

**GA Health Medical Devices Limited**  
The Glasshouses Blackrock, Frascati Hall,  
Sweetman's Ave, Newtown Blackrock,  
Blackrock, Co. Dublin, A94 F9N7, Ireland  
☎ +353 (0)44 931 1050  
✉ [inquiry@gahealth.com](mailto:inquiry@gahealth.com)  
🌐 [GAhealth.com](http://GAhealth.com)